

The New California State Parks Cannabis Program, an Opportunity for Engagement

2020 CalTHPO and SHPO Summit
October 1, 2020

Mike McGuirt

CA State Parks Cannabis Program Cultural Resources Manager

CA State Parks Headquarters, Sacramento

michael.mcguirt@parks.ca.gov

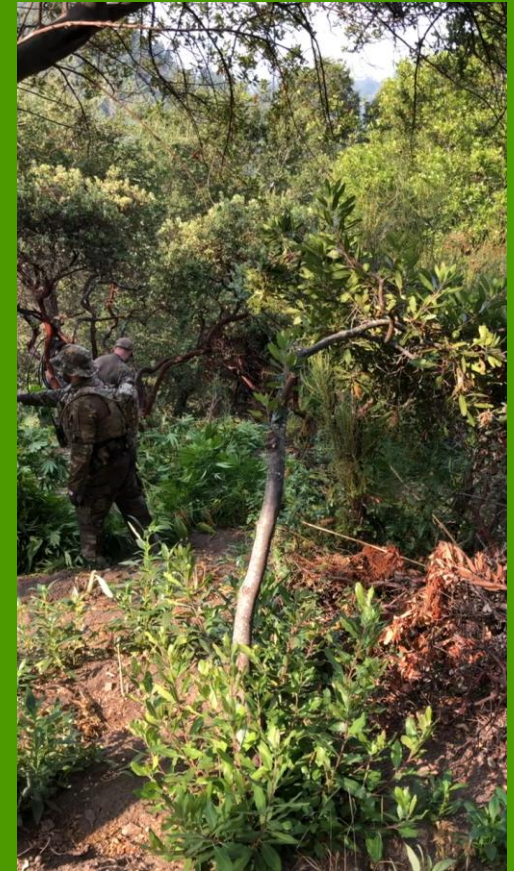


Key Points

CA State Park Cannabis Program, a Proposition 64 Initiative

Program Purposes

- Identify and assess environmental damage to CA watersheds due to illegal cannabis cultivation
- Remediation and mitigation of the natural and cultural resources damage that's already occurred
- Discourage future illegal cannabis cultivation through new park unit operation and resource stewardship procedures
- Development of grants program to expand geographic scope of watershed protection



Key Points

CA State Park Cannabis Program and Native American Engagement

Opportunities for Engagement

- Consultation on projects to remediate past illegal cannabis-related environmental damage to watersheds
- Consultation on how to change park operations and our stewardship of natural and cultural resources to discourage future cannabis-related watershed damage
- Consultation on grant application criteria that take into account Native American perspectives on watershed restoration and protection



The Cannabis Program's ~~Three Initial~~ Five Eventual Subprograms

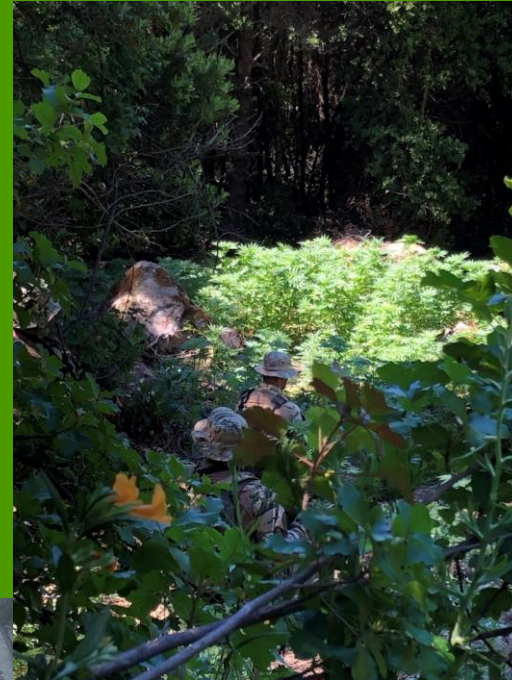
- Assessment
- Remediation and Restoration
- Ingress and Egress
- Watershed Protection through Modifications to Park Unit Operations and Resource Stewardship
- Watershed Protection Grants Program



The Scope of the Problem, Illegal Cannabis Cultivation on Our Park Units

The Rough Tally So Far

- There are presently 400-450 known cannabis grow complex across 280 park units
- The 400-450 known complexes probably represent < 10 percent of the actual number out on the ground



Variations on the Theme, Grow Complex Diversity



Coniferous
Forest Complex



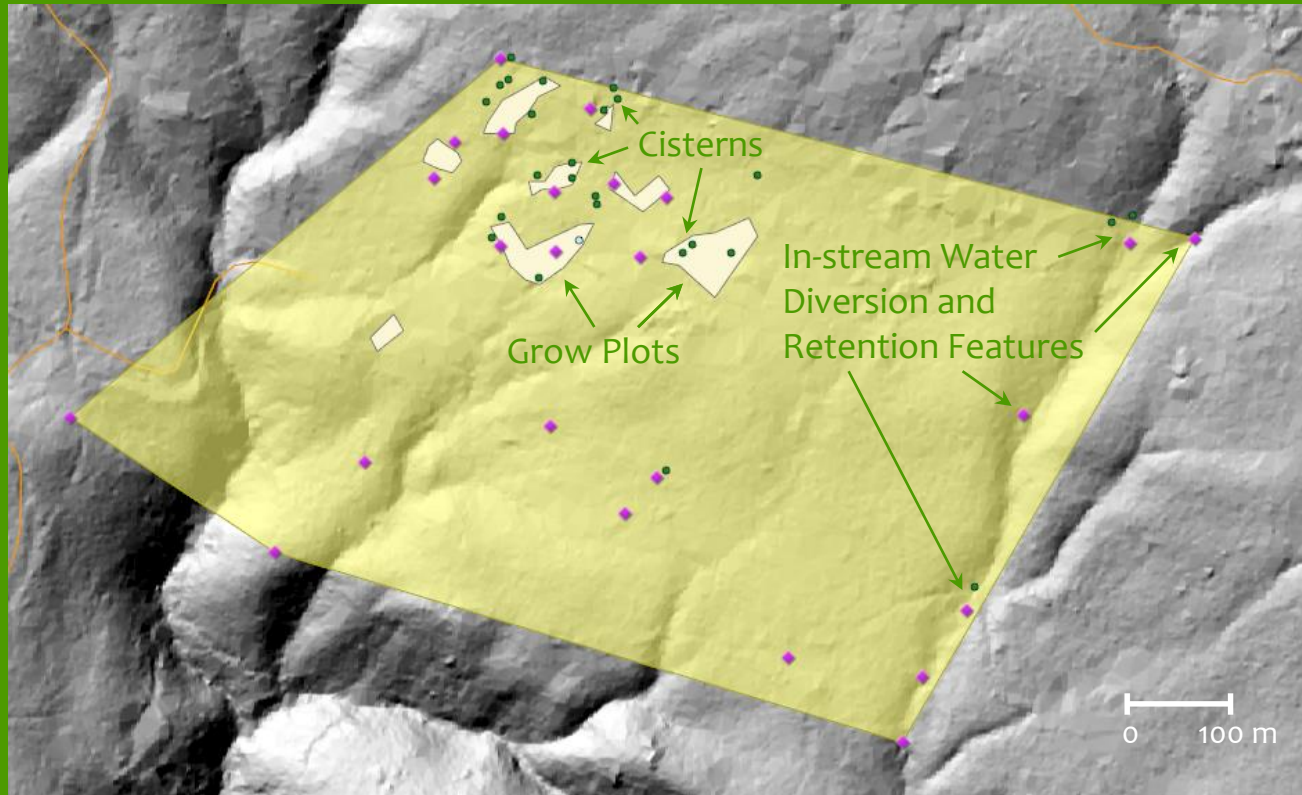
Manzanita Understory Complex



Open Field Complex



The Scene of Watershed Damage, the Grow Complex



Salt Point State Park Grow Complex 2020



Grow Complexes Have Many Components



Grow Plot
Supplies



Drying Racks



Potting Tables



Cannabis Program Engagement with Native American Communities So Far

- The Present to 12-24 Months Out—the Assessment, and Remediation and Restoration Subprograms

Darren Andolina
Associate State Archeologist
CRD Cannabis Group, SoCal
Darren.Andolina@parks.ca.gov

Stephanie Gallanosa
Associate State Archeologist
CRD Cannabis Group, NorCal
Stephanie.Gallanosa@parks.ca.gov

- 24-36 Months Out—A Park Unit Operations and Resource Stewardship Watershed Protection Subprogram and a Watershed Protection Grants Subprogram



Wrap-up

California State Parks Cannabis Program

- A Proposition 64 initiative to restore and protect watersheds in our park units and beyond
- CA State Parks seeks the participation of California's Native American communities in the development and administration of the Cannabis program

