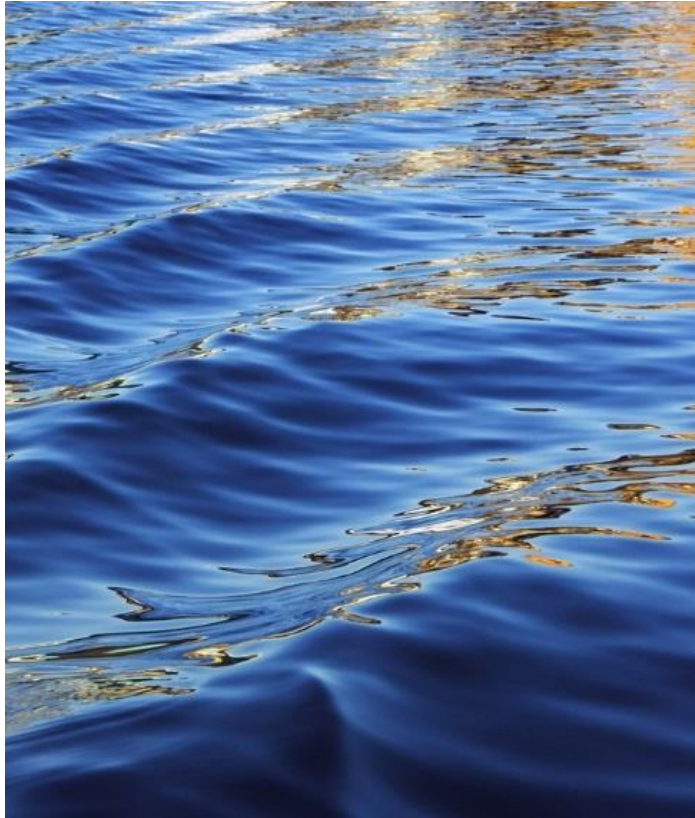




Southern Great Plains Cohort

Remote Group Technical Assistance

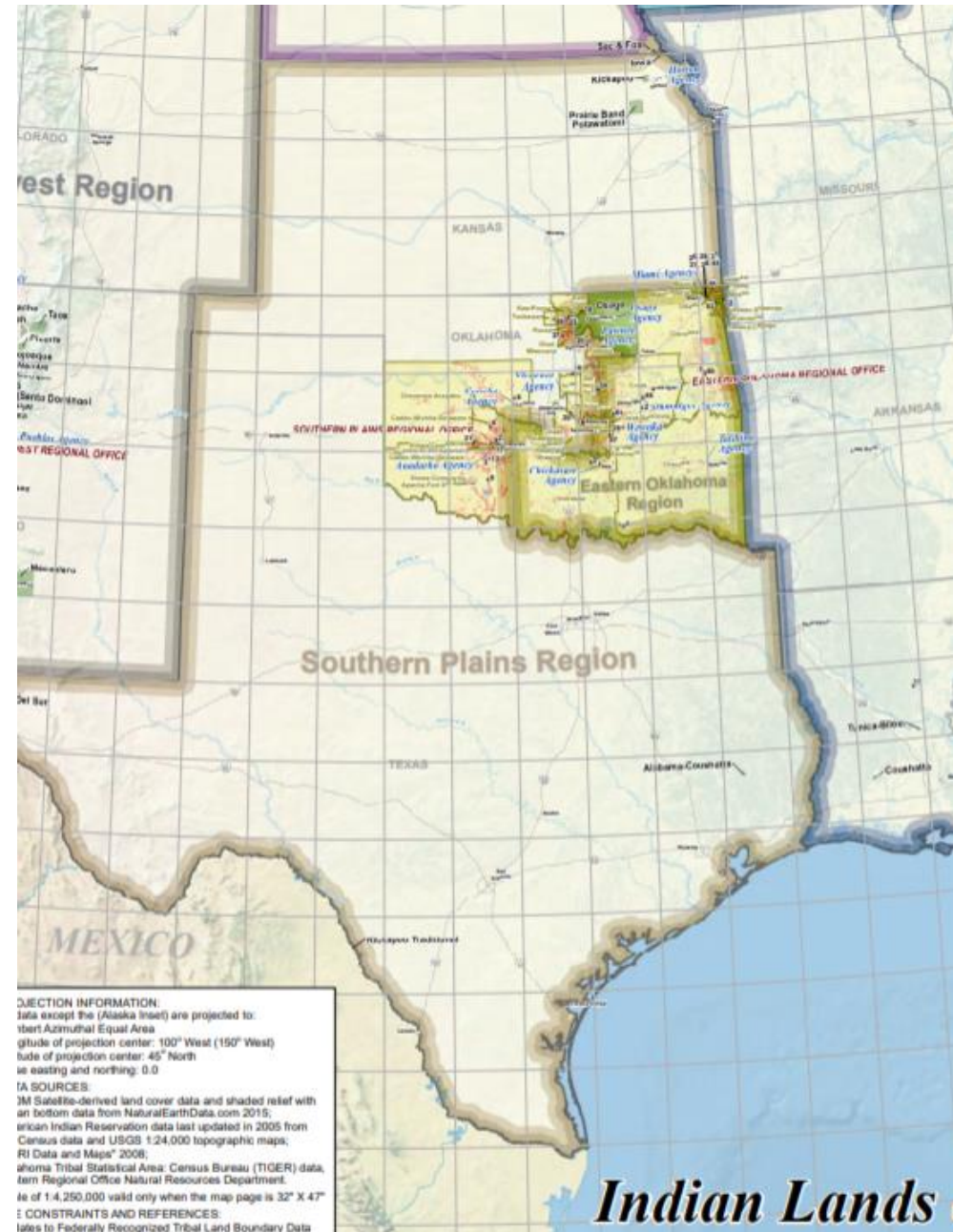
May 7, 2020; 11-1pm CDT



Today's Agenda

11:00am – 1:00pm CDT

- Introductions
- Regional resources
- Facilitated discussion to share regional knowledge, experiences, ideas and needs
- Demonstration of TCHA tools
- Technical assistance/Q&A



Introductions

Purpose

- Technical assistance remote workshops are designed for and focused exclusively on the unique climate and health exposures, impacts and strategies of selected regional cohorts
- Supplements the national training by leveraging and sharing region-specific knowledge, data, partnerships, and other opportunities and resources
- Supports regional and multidisciplinary relationship building and collaboration

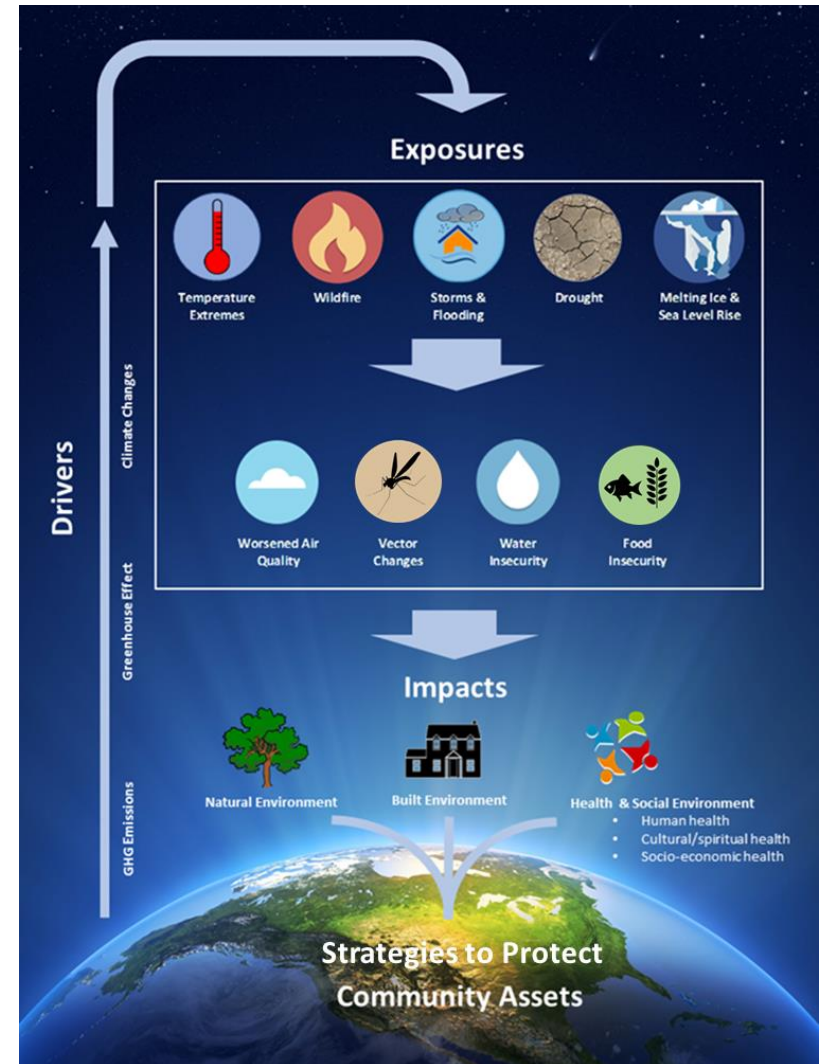
Please introduce yourself

- Name
- Organization
- Location
- Your role in climate change

Introduction to Southern Great Plains Climate Exposures and Impacts

- Rising temperatures are leading to increased demand for water and energy. In parts of the region, this will constrain development, stress natural resources, and increase competition for water. New agricultural practices will be needed to cope with changing conditions.
- Less precipitation and greater evaporation will accelerate depletion of water resources (e.g. High Plains Aquifer)
- Extreme events include storms, hurricanes, and wildfire
- Communities that are already the most vulnerable to weather and climate extremes will be stressed even further by more frequent extreme events occurring within an already highly variable climate system.
- Alter the habitats of vectors (mosquitoes, ticks, rodents, and fleas)
- Sea level rise in coastal areas (e.g. Louisiana)

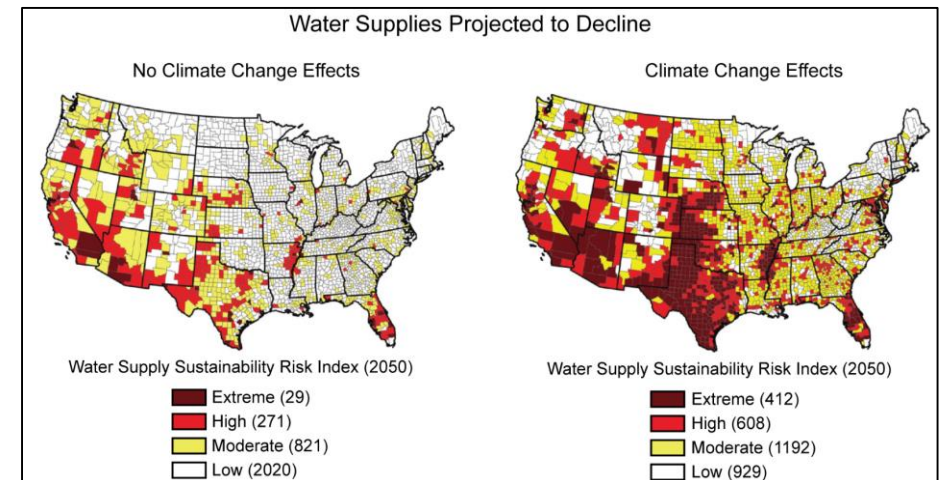
Group Discussion:
What health impacts is your community is facing?



Introduction to Southern Great Plains Climate Exposures and Impacts

Exposures will increase public health risks:

- Heat related illness/premature death
- Vector-borne disease (e.g. hantavirus, West Nile virus, Rocky Mountain spotted fever, dengue, Zika)
- Physical injury or population displacement from extreme events
- Disruptions to water supply availability
- Disease due to drinking water and fish contamination
- Disruptions to food supply disruption
- Mental stress from drought
- Threats to tribal cultural traditions and practices (e.g. declining native species)



Regional Resources

A few places to find more information about So. Great Plains exposures and impacts

National Reports

Fourth National Climate Assessment
Southern Great Plains Chapter

<https://nca2018.globalchange.gov/chapter/23/>

Great Plains Highlights

<https://nca2014.globalchange.gov/highlights/regions/great-plains>

Tribes and Indigenous People's Chapter

<https://nca2018.globalchange.gov/chapter/15/>

USDA - Climate Change and Indigenous Peoples: A Synthesis of Current Impacts and Experiences

https://www.fs.fed.us/pnw/pubs/pnw_gtr944.pdf



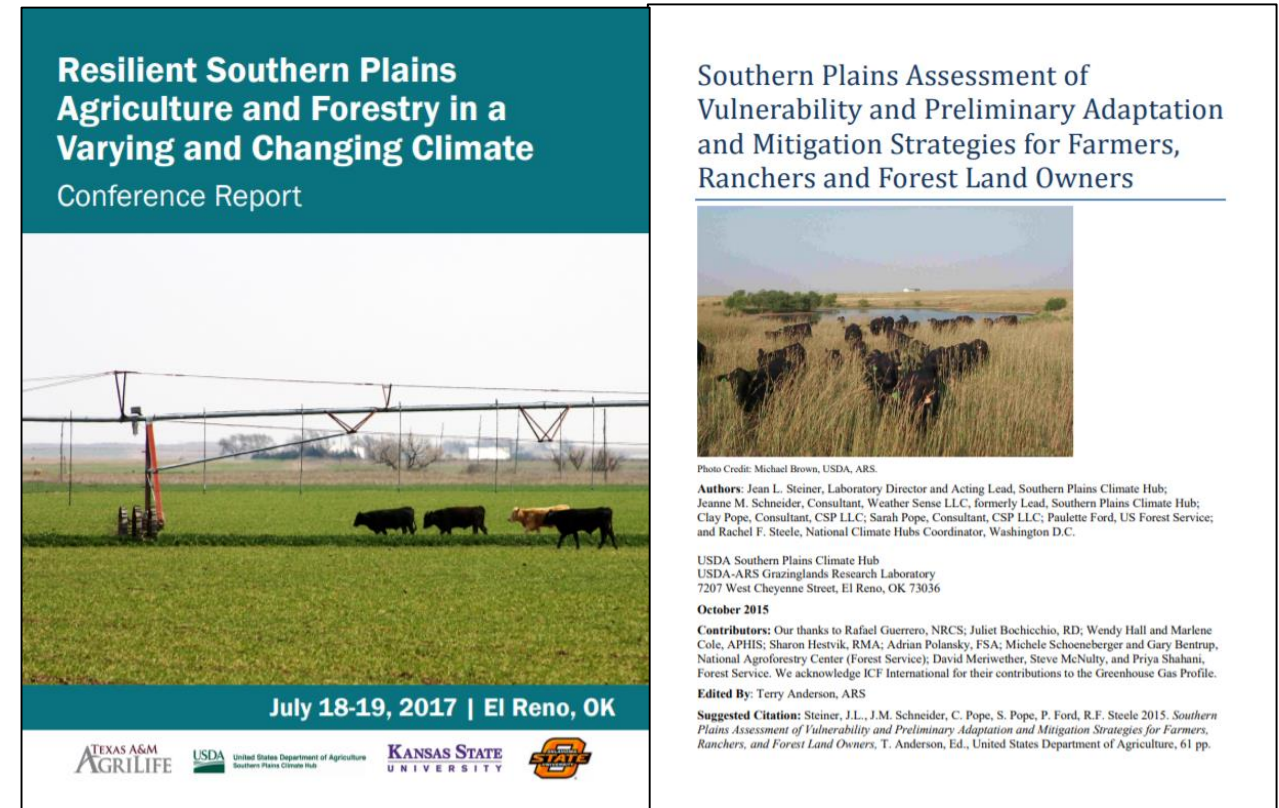
Regional Resources

Regional Reports

Resilient Southern Plains Agriculture and Forestry in a Varying and Changing Climate: Conference Report
https://www.climatehubs.usda.gov/sites/default/files/Resilient_Southern_Plains_Agriculture.pdf

Southern Plains Assessment of Vulnerability and Preliminary Adaptation and Mitigation Strategies for Farmers, Ranchers and Forest Land Owners (2015)
https://www.climatehubs.usda.gov/sites/default/files/SouthernPlains_Vulnerability_Assessment_1.pdf

Developing Agricultural Solutions for the Southern Plains: Responding to Climate Change and Resource Constraints
https://www.climatehubs.usda.gov/sites/default/files/Lacewell_et_al_2018.PDF



Southern Plains Assessment of Vulnerability and Preliminary Adaptation and Mitigation Strategies for Farmers, Ranchers and Forest Land Owners



Photo Credit: Michael Brown, USDA, ARS.

Authors: Jean L. Steiner, Laboratory Director and Acting Lead, Southern Plains Climate Hub; Jeanne M. Schneider, Consultant, Weather Sense LLC, formerly Lead, Southern Plains Climate Hub; Clay Pope, Consultant, CSP LLC; Sarah Pope, Consultant, CSP LLC; Paulette Ford, US Forest Service; and Rachel F. Steele, National Climate Hubs Coordinator, Washington D.C.

USDA Southern Plains Climate Hub
USDA-ARS Grazinglands Research Laboratory
7207 West Cheyenne Street, El Reno, OK 73036

October 2015

Contributors: Our thanks to Rafael Guerrero, NRCS; Juliet Bochicchio, RD; Wendy Hall and Marlene Cole, APHIS; Sharon Hestvik, RMA; Adrian Polansky, FSA; Michele Schoeneberger and Gary Benstrup, National Agroforestry Center (Forest Service); David Meriwether, Steve McNulty, and Priya Shahani, Forest Service. We acknowledge ICF International for their contributions to the Greenhouse Gas Profile.

Edited By: Terry Anderson, ARS

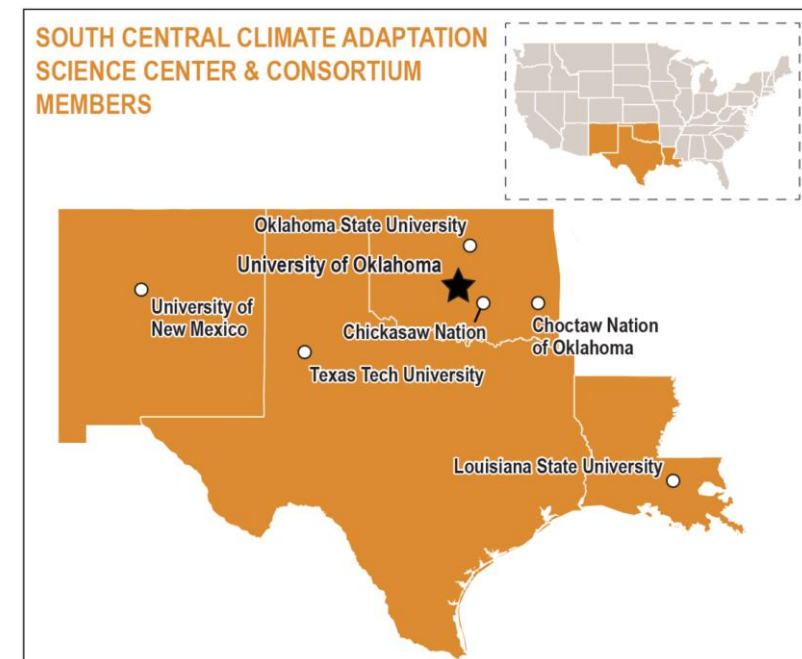
Suggested Citation: Steiner, J.L., J.M. Schneider, C. Pope, S. Pope, P. Ford, R.F. Steele 2015. *Southern Plains Assessment of Vulnerability and Preliminary Adaptation and Mitigation Strategies for Farmers, Ranchers, and Forest Land Owners*. T. Anderson, Ed., United States Department of Agriculture, 61 pp.

Regional Resources

South Central Climate Adaptation Science Center

<https://southcentralclimate.org/tribal-nations-climate/>

- Provides decision makers with the science, tools, and information they need to address the impacts of climate variability and change on their areas of responsibility
- Native Nations Climate Adaptation & Vulnerability Assessment Resources
<https://southcentralclimate.org/tribal-nations-climate/native-nations-climate-adaptation-resources/>



Regional Resources

April Taylor

April Taylor, GISP

Sustainability Scientist

Chickasaw Nation, Choctaw Nation of
Oklahoma, South Central Climate

Adaptation Science Center

Phone: 1-580-235-7430

Email: April.Taylor@chickasaw.net

<https://southcentralclimate.org/about-us/our-consortium/>

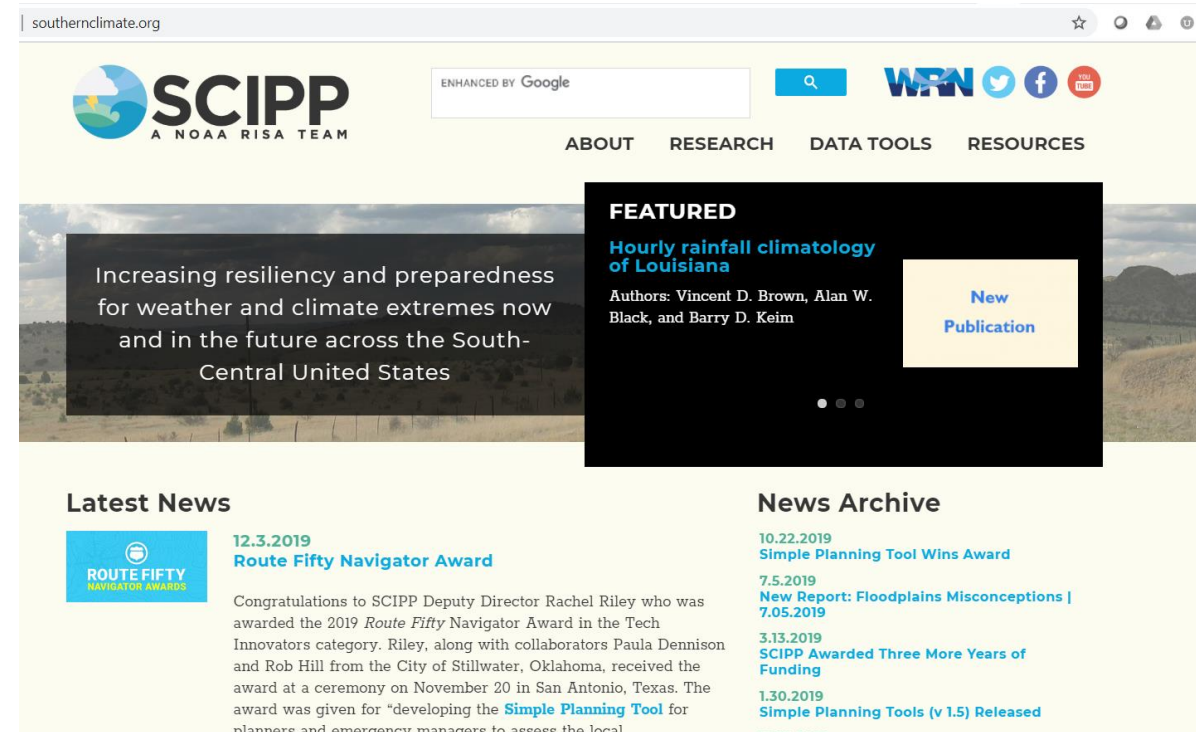


Regional Resources

Southern Climate Impacts Planning Program (SCIPP)
Norman, OK

<http://www.southernclimate.org/>

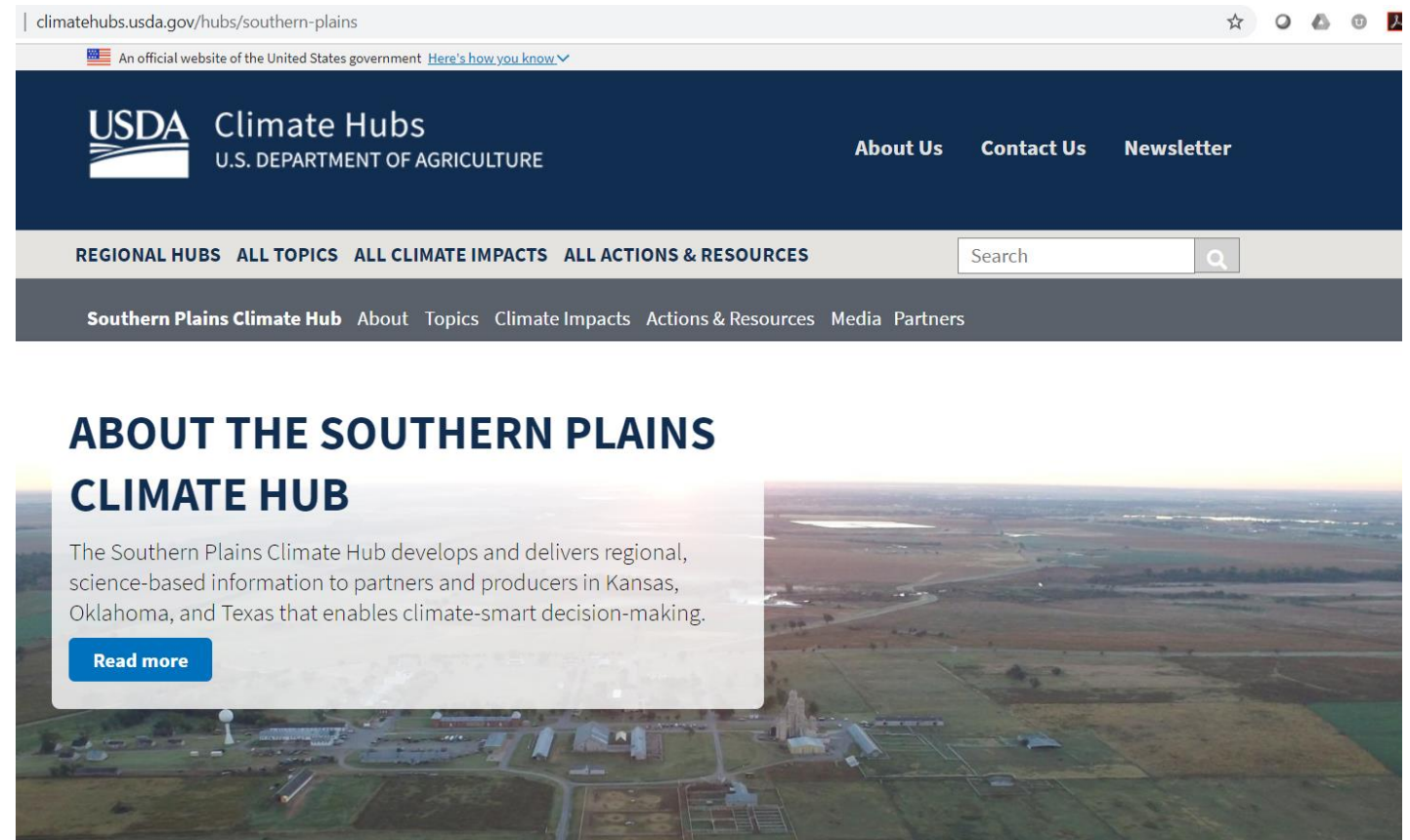
The mission of SCIPP, a NOAA RISA Team, is to increase the awareness of and preparedness for southern U.S. climate hazards for both present day and future climate conditions through improved local hazard mitigation planning; actively engage stakeholder groups to promote increased two-way knowledge transfer between climate scientists and decision makers; provide local, state, and regional decision makers with climate hazard data that is comprehensive, accurate, and easily accessible; and identify new, critical areas of applied climate research for the southern U.S. as technologies, research, and knowledge evolves.



Regional Resources

Southern Plains Climate Hub

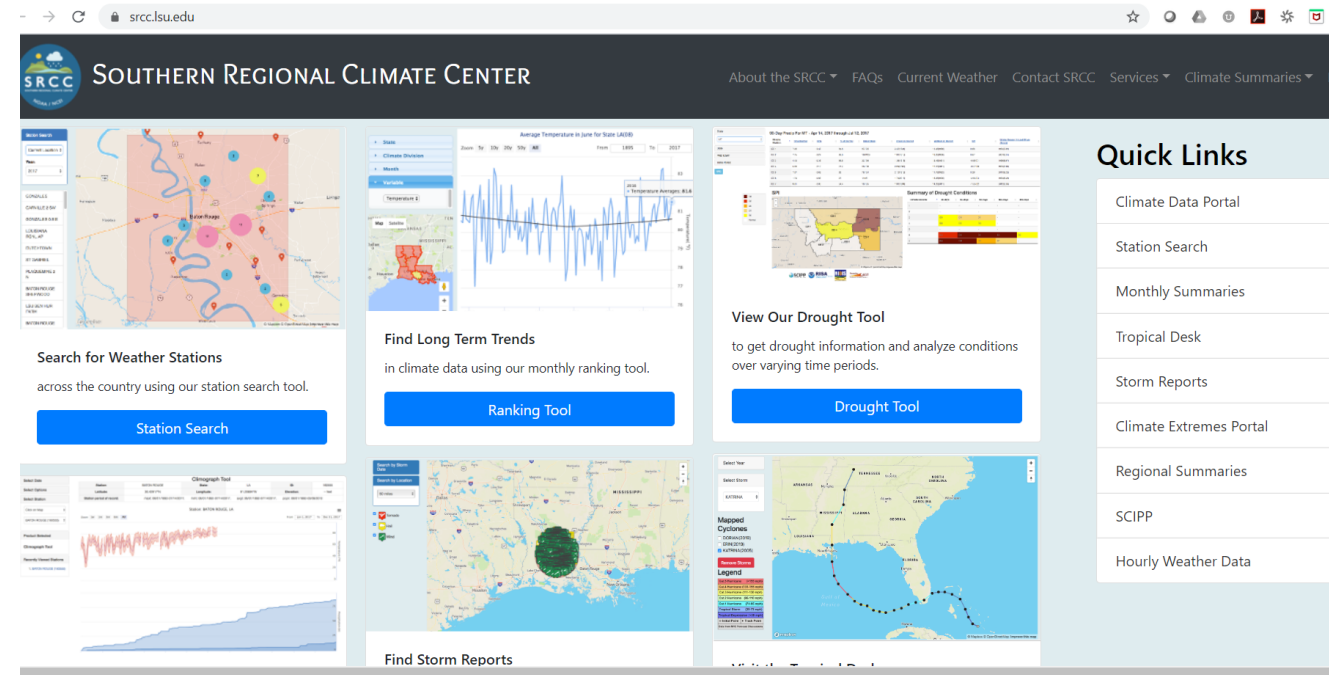
<https://www.climatehubs.usda.gov/hubs/southern-plains>



Regional Resources

Southern Regional Climate Center
Baton Rouge, LA
<https://www.srcc.lsu.edu/>

- The center's mission is to increase the use and availability of climate data, tools, & information in the Southern U.S. to help private and public sector constituents reduce risk & improve resilience to the impacts of climate variability & change.



Regional Resources

Texas Sea Grant

College Station, TX

<https://texasseagrant.org/>

- Improves the understanding, wise use, and stewardship of Texas coastal and marine resources.
- Develops and supports research, education and outreach programs and partnerships.
- Unites the resources of the federal government, the state, and universities across the state to create knowledge, tools, products and services that benefit the economy, the environment, and the citizens of Texas.

Regional Resources

Tribal Epidemiology Centers

Oklahoma Area

<http://tribalepicenters.org/oklahoma-area-tribal-epidemiology-center/>

- To improve the health of American Indian/Alaska Natives in Kansas, Oklahoma and Texas, by providing public health services in epidemiology, data management, data analysis, training, health promotion/disease prevention, and research through outreach and creative partnerships.



Regional Resources

- State specific resources: Oklahoma

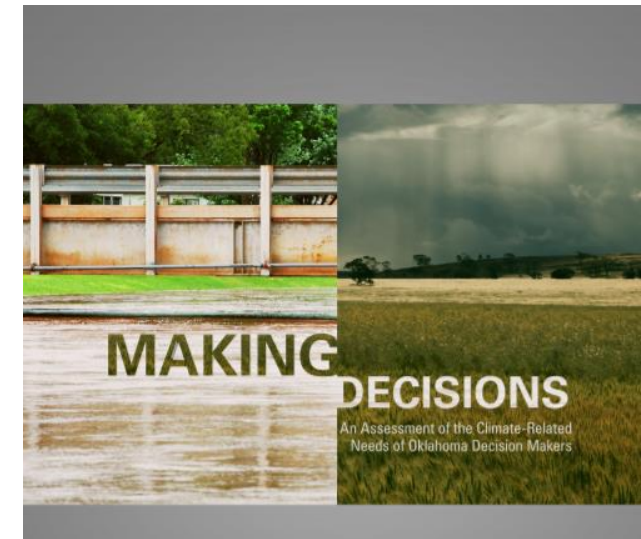
Making Decisions: An Assessment of the Climate-Related Needs of Oklahoma Decision Makers (2012, SCIPP)

http://www.southernclimate.org/publications/OK_Climate_Needs_Assessment_Report_Final.pdf

State Climatologist
Oklahoma-Gary McManus
Norman, OK

<http://climate.ok.gov/>

- Acquires, processes, and disseminates climate and weather data and information for use by Oklahoma citizens. Provides climate services and conducts research on the impacts of climate on human activities.



The image is a screenshot of the Oklahoma Climatological Survey website (climate.ok.gov). The website has a blue header with the organization's logo and name. Below the header is a navigation bar with links for Home, About, News, Contact, and Oklahoma Mesonet. A secondary navigation bar includes links for Climate, Weather, Research, Outreach, and Reports, along with a search bar. The main content area features a large banner with a photograph of a bird in flight and the headline "Weather Hazards Were Plentiful in April". Below the headline is a sub-headline: "Severe weather won a hard fought battle over drought and freezing cold to top April's weather headlines." and a "Read More" button. Below the banner is a section titled "Climate Maps and Products". On the left, there is a "News" section with two articles: "Weather Hazards Battle for April Headlines" dated Fri, May 01, 2020, and "Spring Steps Forward During March" dated Wed, Apr 01, 2020. On the right, there is a "March 2020" section with a "SUMMARY" tab and a photograph of clouds. Below this is a "Norman" weather section showing a current temperature of 60°F, a dewpoint of 48°F, 24-hr rainfall of 0.00 in., and wind of ESE at 8 mph. At the bottom right, there is a "Today, Tonight, Tomorrow" forecast section showing a 30% chance of rain today, an 80% chance tonight, and a sunny day tomorrow.

Regional Resources

- State specific resources: Texas

EPA Factsheet: Texas Climate and Health Resources

https://ncics.org/pub/webfiles/climate_health_resources/texas-fact-sheet.pdf

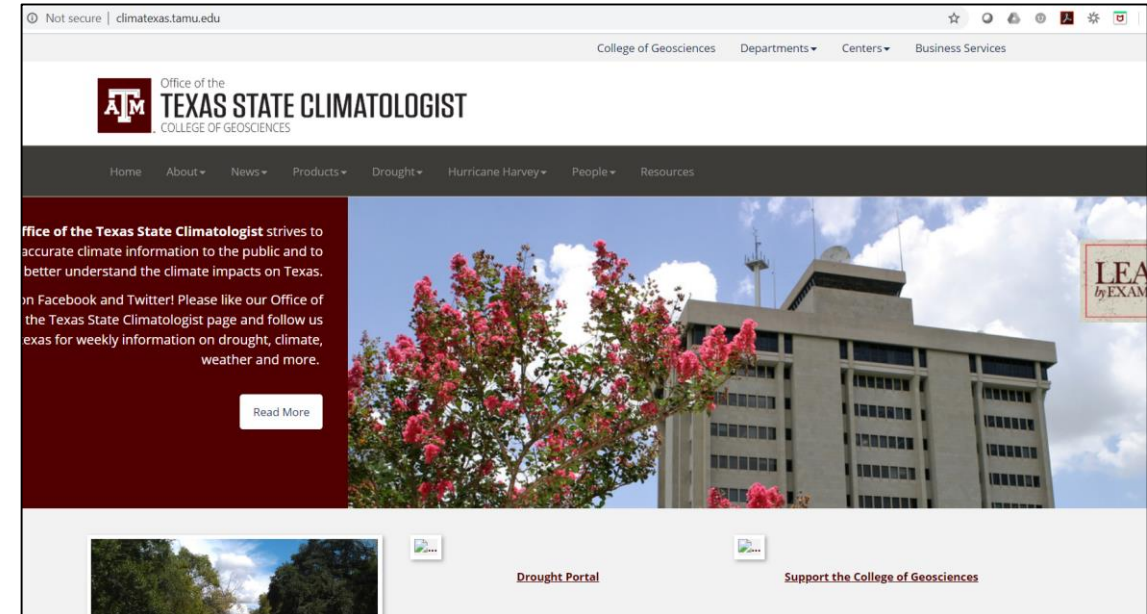
Texas-Dr. John Nielsen-Gammon
College Station, TX

<https://climatexas.tamu.edu/>

- Provides the state of Texas with accurate climate information and expertise in the field of climatology. Also promotes education and understanding of the climate, its elements, and its impacts on Texas.

Texas Sea Grant
College Station, TX

<https://texasseagrant>



What has your organization to prepare for the health or other impacts of climate change?

What health impacts are you most concerned about?

What resources have been particularly useful?

What were some of your biggest challenges?

What adaptation strategies are working?

How have you partnered with other tribes or agencies in the region?

Facilitated Discussion

Facilitated discussion to share regional knowledge, experiences, ideas and needs

Demonstration of TCHP Tools

www.tribalclimateahealth.org



About [Learn](#) News/Events Connect

Adaptation Planning Tool – [Exposures, Impacts, and Strategies Inventory \(EISI\) tool](#) (Updated October 2, 2019 BETA VERSION). This is a draft of a customizable companion tool that can support communities that are conducting adaptation planning. Information and data sources are compiled and organized to present information needed at several decision-making steps to help your community prepare to take the most effective actions. We are continuing to build functionality and improve information. The latest update includes more indicators and data sources (national and California specific). Please send questions or comments to ahacker@prospersustainably.com.

Survey Template – [Climate Vulnerability Experiences and Priorities Survey](#) for gathering initial community input. If you have a Google account, you can use [this link](#) to create and save a copy of this template to customize for your tribe.

Sample Reports – [Pala Band of Mission Indians Climate Change Vulnerability Assessment](#) and [Climate Change Adaptation Plan](#). These reports incorporate health impacts and strategies. This Word version allows others to modify for their own community.

Fact Sheets – Pala Band of Mission Indian produced the following fact sheets to help their community understand high-risk climate exposures and how to recognize and prepare for climate threats:

- [Extreme Heat \(Elevated Temperatures\)](#)
- [Wildfires](#)
- [Flooding and Storms](#)
- [Drought](#)

Other Relevant Training Materials not Produced by the Tribal Climate Health Project

Tribal Resolution Template – [ITEP's Tribal Climate Change Resolution Template](#)

Technical Assistance/Q&A

What other Technical Assistance questions do you have?

Additional Regional Resources Shared By Attendees During Meeting