



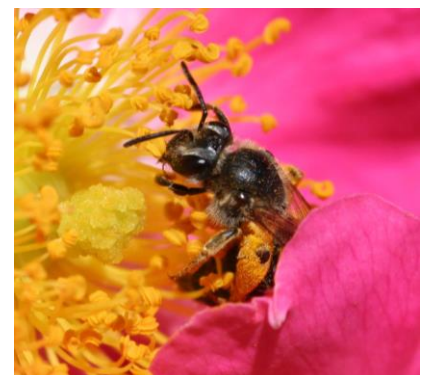
MEET PALA'S POLLINATOR SPECIES

PALA'S AWESOME POLLINATOR FRIENDS!

Do you know who our important pollinators are around Pala? Do you know how to make your yard an inviting habitat for them?

POLLINATOR GARDENS

Make your garden a certified wildlife habitat that will invite in our pollinators – use native plants, water sources, & nesting materials to make a friendly pollinator garden.



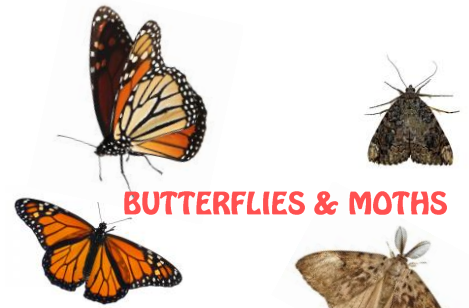
POLLINATOR'S ROCK

Pollinators are vital for our food supply—without pollinators, we lose 90% of our plants (= 1/3 of our food crops!)

Important food source for other animals

Essential for a healthy ecosystem & biodiversity Plants & pollinators have evolved to work together

As important as sunlight, moisture, nutrients!



BUTTERFLIES & MOTHS



BEETLES



ULTRA-GREEN SWEAT BEE



BUMBLE BEE



CARPENTER BEE



LEAFCUTTER BEE



*Plant a
Pollinator
Garden*



MASON BEE

BATS



HOW CAN I HELP?

PLANT LOTS OF NATIVE (FLOWER) PLANTS

Use lots of different colors, shapes, & smells—to attract pollinators
Plant in clumps—it attracts more pollinators

MAKE A POLLINATOR-FRIENDLY GARDEN

Food, water, habitat/shelter for pollinators
Use native plants that flower throughout the growing season
Make it a NWS Certified Wildlife Habitat

DON'T USE PESTICIDES/HERBICIDES/INSECTICIDES

Use a natural pest control instead (Integrated Pest Management)
Remove pests by hand or just let them be

MAKE AN INSECT HOTEL OR BEE/BAT HOUSE

Provide nesting habitat—tall grasses, fallen branches
Bee nesting block or insect hotel

BE A BEEKEEPER & DO CITIZEN SCIENCE PROJECTS

Track Monarch Butterflies & other pollinators

WHY ARE POLLINATORS DYING?

- Climate Change
- Habitat Loss & Fragmentation
- Pesticide Use by Homeowners & Farmers
- Invasive (Non-Native) Plants Moving In
- Changes in Agriculture/Grazing



HUMMINGBIRDS